

RECEIVED

2021 JAN -4 PM 3: 19
OFFICE OF THE DIRECTOR
DEPARTMENT OF PLANNING
COUNTY OF MAUI OFFICE OF THE MAYOR

Department Submittal/Approved by:

Michele McLean Mulvihill
Printed Name/Signature of Department Director

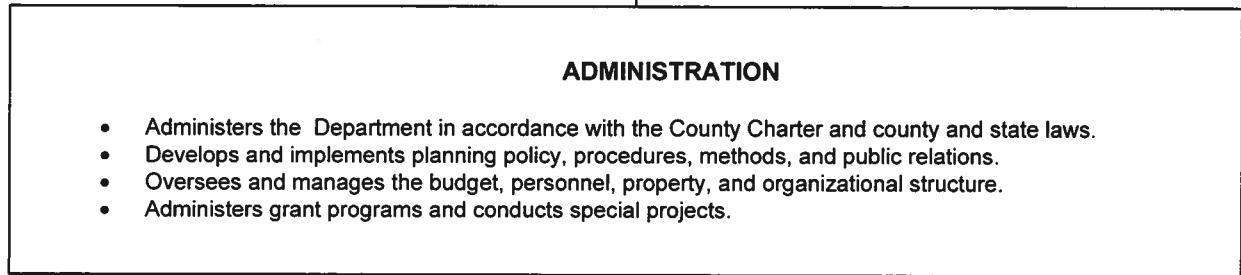
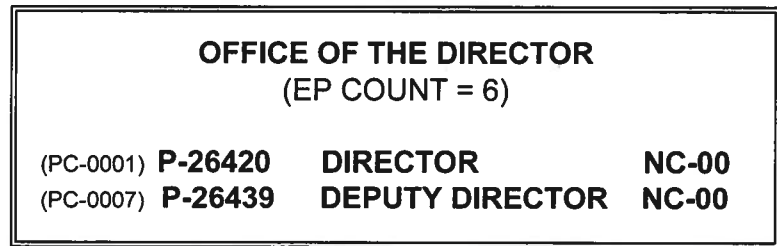
1-4-21
Date

Approved by:

Sandy K. Baz
Sandy K. Baz, Managing Director

FEB 1 2021
Date

FUNCTIONAL CHART
As of September 30, 2020
FY 2021 Organizational Chart



Department Submittal/Approved by:

Michelle McLean
Printed Name/Signature of Department Director

1-4-21
Date

Approved by:

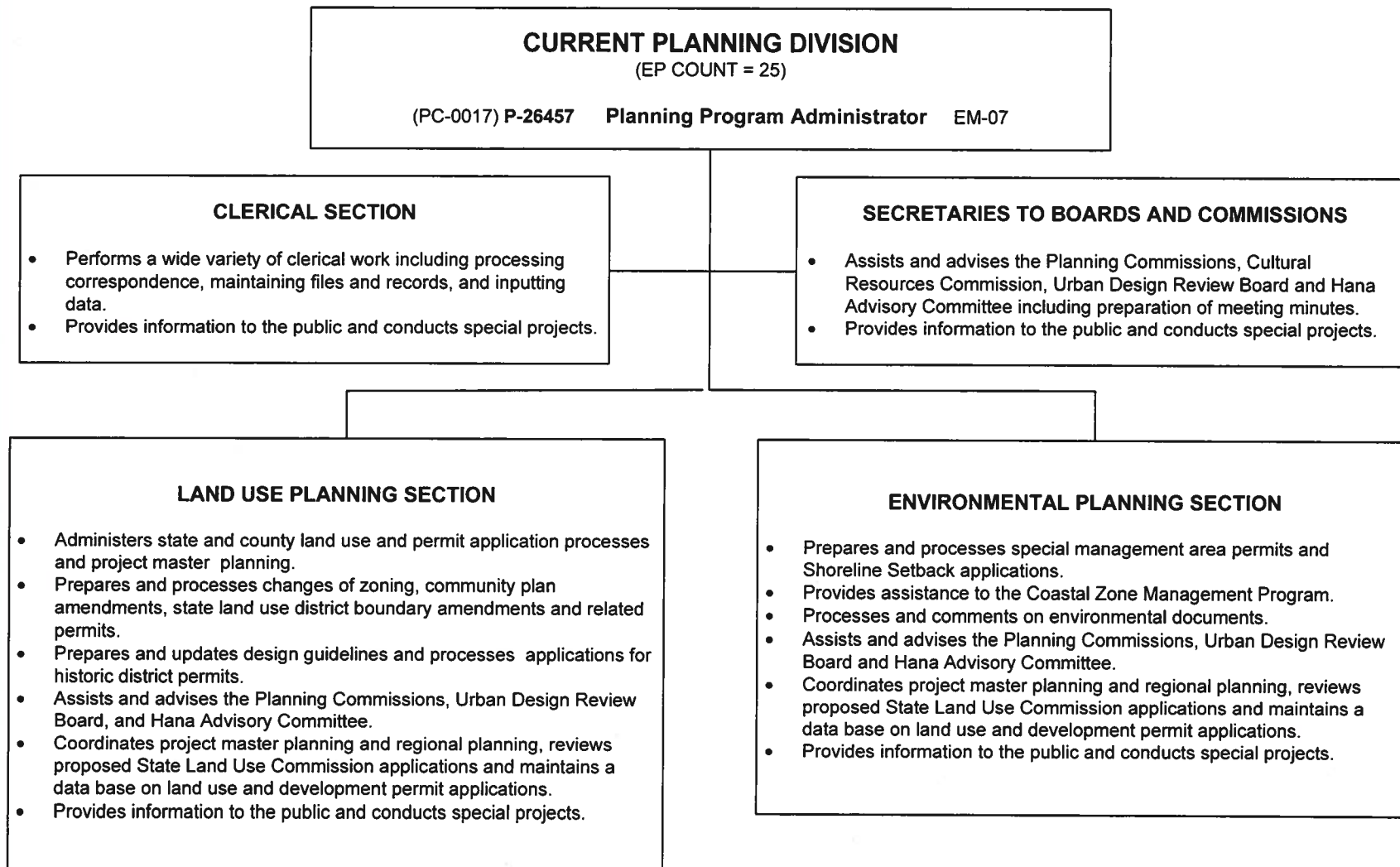
Sandy K. Baz
Sandy K. Baz, Managing Director

FEB 1 2021
Date

CURRENT PLANNING DIVISION
DEPARTMENT OF PLANNING
COUNTY OF MAUI

FUNCTIONAL CHART
As of September 30, 2020

FY 2021 Organizational Chart



Department Submittal/Approved by:

Michele McLean Muhlstein
Printed Name/Signature of Department Director

1-4-21
Date

Approved by:

Sandy K. Baz
Sandy K. Baz, Managing Director

FEB 1 2021
Date

ZONING ADMINISTRATION AND
ENFORCEMENT DIVISION
DEPARTMENT OF PLANNING
COUNTY OF MAUI

FUNCTIONAL CHART
As of September 30, 2020

FY 2021 Organizational Chart

**ZONING ADMINISTRATION AND
ENFORCEMENT DIVISION**
(EP COUNT = 27)
(PC-0037) P-26517 Planning Program Administrator EM-07

- ZONING ENFORCEMENT SECTION**
- Responds to public complaints relating to land use violations.
 - Conducts investigations.
 - Issues Notices of Warning and Violation.
 - Provides information to the public and conducts special projects.

- PLANNING SECTION**
- Administers state and county land use laws, rules, codes, regulations, and the general and community plans.
 - Serves as primary departmental advisory and information branch regarding the interpretation and application of codes, ordinances, decision and orders, and other matters of enforcement.
 - Prepares and processes variance and appeal applications and advises the Board of Variances and Appeals.
 - Administers federal, state and county flood hazard regulations.
 - Provides information to the public and conducts special projects.
 - Assists with Coastal Zone Management Program and land use applications and permits review.
 - Processes landscape planting plans and sign permits.

- PLANS REVIEW SECTION**
- Reviews proposed building permits for land use compliance.
 - Assists with sign applications, Coastal Zone Management Program, and land use applications and permits review.
 - Provides information to the public and conducts special projects.
 - Confirms zoning, community plan, state land use district and other special designations.
 - Coordinates and prepares revisions to county zoning ordinances and regulations, and reviews state land use legislation and regulations.

Department Submittal/Approved by:

Michele McLean Muliukim
Printed Name/Signature of Department Director

1-9-21
Date

**LONG RANGE PLANNING DIVISION
DEPARTMENT OF PLANNING
COUNTY OF MAUI**

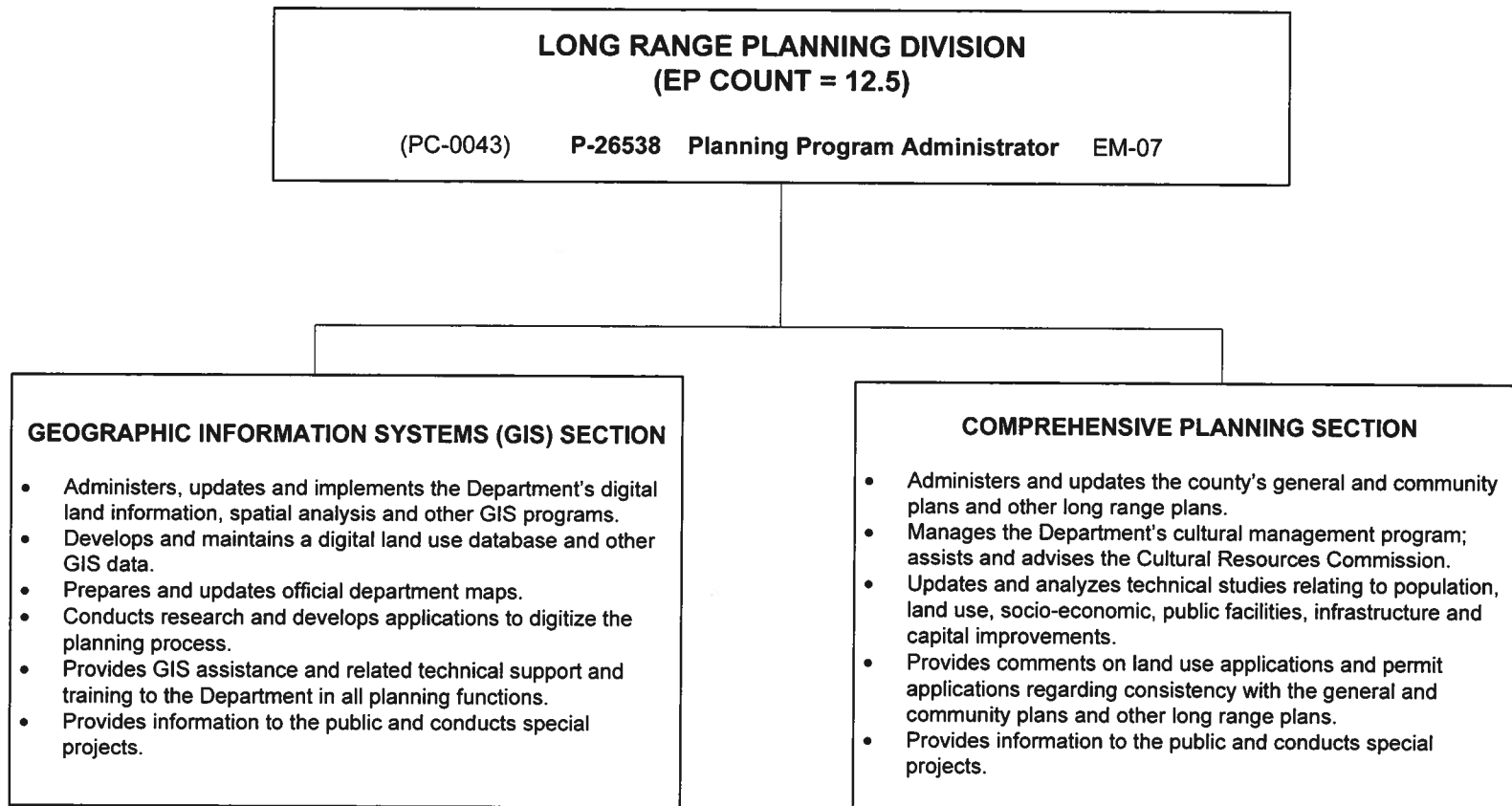
Approved by:

Sandy K. Baz
Sandy K. Baz, Managing Director

FEB 1 2021
Date

**FUNCTIONAL CHART
As of September 30, 2020**

FY 2021 Organizational Chart



Department Submittal/Approved by:

Michele Mclean Muluhili
Printed Name/Signature of Department Director

1-4-21
Date

Approved by:

Sandy K. Baz
Sandy K. Baz, Managing Director

FEB 1 2021
Date

PLAN IMPLEMENTATION DIVISION
DEPARTMENT OF PLANNING
COUNTY OF MAUI

FUNCTIONAL CHART
As of September 30, 2020

FY 2021 Organizational Chart

**PLAN IMPLEMENTATION DIVISION
(EP COUNT = 4)**

(PC-0063) **P-28567 Planning Program Manager** EM-05

- Implements and tracks the Maui Island Plan and Community Plans
- Prepares reports for County Council
- Coordinates with other divisions and other county agencies on plan implementation, CIP forecasting and project development
- Drafts ordinances and processes them through adoption
- Reviews and tracks state land use legislation
- Administers, updates and implements the Department's digital zoning map, digital database and other GIS data

Department Submittal/Approved by:

Michelle McLean Muluwaha
Printed Name/Signature of Department Director

3-2-21
Date

Approved by:

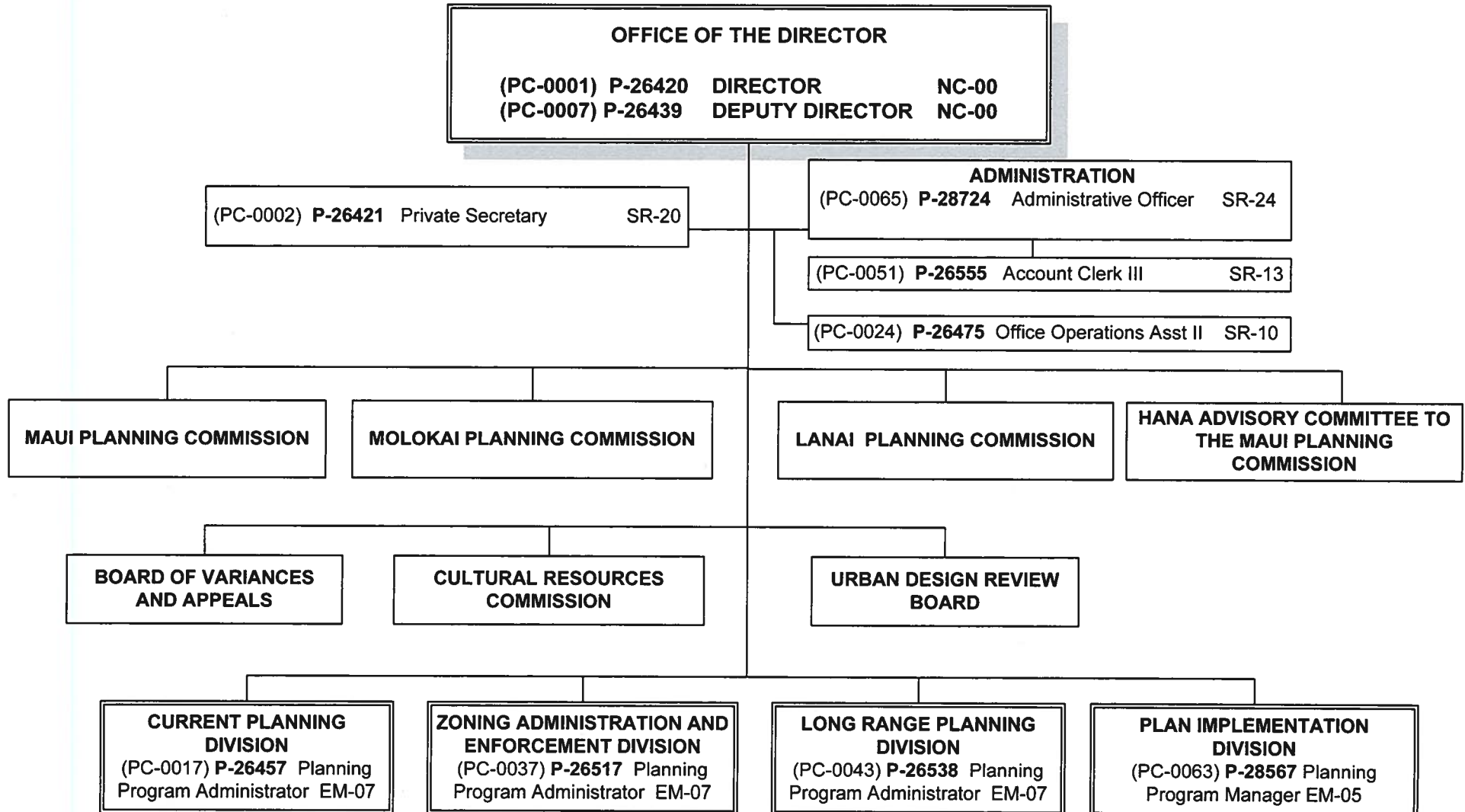
Sandy K. Barz
Sandy K. Barz, Managing Director

3/30/21
Date

OFFICE OF THE DIRECTOR
DEPARTMENT OF PLANNING
COUNTY OF MAUI

TABLE OF ORGANIZATION
As of September 30, 2020

FY 2021 Organizational Chart



Department Submittal/Approved by:

Michelle McLean Muluhi
Printed Name/Signature of Department Director

3-18-21
Date

Approved by:

Sandy K. Baz
Sandy K. Baz, Managing Director

3/30/21
Date

RECEIVED

2021 MAR 22 PM 2:39

OFFICE OF THE MAYOR

CURRENT PLANNING DIVISION
DEPARTMENT OF PLANNING
COUNTY OF MAUI

2021 MAR 22 PM 2:39
TABLE OF ORGANIZATION

As of September 30, 2020
OFFICE OF THE MAYOR
FY 2021 Organizational Chart

CURRENT PLANNING DIVISION

(PC-0017) P-26457 Planning Program Administrator EM-07

CLERICAL SECTION

(PC-0075) P-29294 Secretary I SR-14 (1)

(PC-0026)	P-26490	Land Use Permit Clerk	(Molokai)	SR-12
(PC-0028)	P-26492	Land Use Permit Clerk	(CZM)	SR-12
(PC-0054)	P-26558	Land Use Permit Clerk		SR-12
(PC-0044)	P-26539	Land Use Permit Clerk		SR-12

SECRETARIES TO BOARDS AND COMMISSIONS

(PC-0005)	P-26438	Secretary to Boards/Commissions II		SR-18
(PC-0023)	P-26474	Secretary to Boards/Commissions II		SR-18
(PC-0033)	P-26513	Secretary to Boards/Commissions II		SR-18

LAND USE PLANNING SECTION

(PC-0018) P-26458 Planner VI SR-26

(PC-0003)	P-26422	Planner V		SR-24
(PC-0035)	P-26515	Planner V		SR-24
(PC-0014)	P-26441	Planner V		SR-24
(PC-0029)	P-26493	Planner V		SR-24
(PC-0083)	P-29896	Planner V		SR-24

(PC-0069) P-28747 Planner V SR-24 (2)

(PC-0021)	P-26472	Planner III		SR-20
(PC-0011)	P-26440	Planner IV		SR-22 (3)

(Expansion) P-31549 Planner I SR-16 (4)

ENVIRONMENTAL PLANNING SECTION

(PC-0076) P-29285 Planner VI SR-26

(PC-0030)	P-26494	Planner V (CZM)		SR-24
(PC-0068)	P-28742	Planner IV (Molokai)		SR-22
(PC-0047)	P-26542	Planner IV (CZM)		SR-22 (5)

(PC-0031)	P-26511	Planner V (CZM)		SR-24
(PC-0059)	P-28537	Planner V		SR-24

CZM = Coastal Zone Management Program (Grant Funded) 106801 FY20 Cost Center

- (1) P-29294 Budgeted reallocation from Secretary I (SR14) to Secretary II (SR16)
- (2) P-28747 Budgeted reallocated from Planner IV (SR 22) to Planner V (SR 24) NDA Attached
- (3) P-26440 Budgeted reallocation from Planner III (SR 20) to Planner IV (SR 22) NDA Attached
- (4) P-31549 Budgeted expansion Funded Planner I NDA Attached - Planner I (SR16) Expansion position was created as Planner I, (SR 16), and not at the budgeted Planner II, (SR 18)
- (5) P-26542 Budgeted reallocation from Planner V (SR 24) to Planner IV (SR 22) NDA Attached

Department Submittal/Approved by:

Jordan S. Hart
Printed Name/Signature of Department Director

2021-03-22
Date

ZONING ADMINISTRATION AND ENFORCEMENT DIVISION
DEPARTMENT OF PLANNING
COUNTY OF MAUI

RECEIVED

2021 MAR 22 PM 2: 39

OFFICE OF THE MAYOR

TABLE OF ORGANIZATION
As of September 30, 2020

FY 2021 Organizational Chart

Approved by:

Sandy K. Bez
Sandy K. Bez, Managing Director

3/30/21
Date

ZONING ADMINISTRATION AND ENFORCEMENT DIVISION
(PC-0037) P-26517 Planning Program Administrator EM-07

(PC-0070) P-28877 Secretary I SR-14 (1)

(PC-0041) P-26536 Sec to Boards/Commissions II SR-18

(PC-0082) P-29728 Office Operations Assistant II SR-10

ZONING ENFORCEMENT SECTION

(PC-0072) P-29252 Supervising Zoning Inspector SR-23

(PCT-0010) P-29897 Office Ops Asst II SR-10

(PC-0077) P-29284 Zoning Inspector II SR-19 (3)
(PC-0074) P-29223 Zoning Inspector II SR-19
(PC-0040) P-26535 Zoning Inspector II SR-19
(PC-0039) P-26534 Zoning Inspector II SR-19
(PC-0048) P-26543 Zoning Inspector II SR-19 (4)

(PCT-0012) P-29899 Zoning Inspector I SR-16 (5)

(PCT-0011) P-29898 Zoning Insp Trainee SR-14

PLANS REVIEW SECTION

(PC-0025) P-26476
Administrative Planning Officer EM-03 (2)

(PC-0057) P-28535 Senior LU&B Plans Examiner SR-21 (2)

(PC-0052) P-26556 LU & Bldg Plans Examiner SR-19

(PC-0078) P-29279 Land Use Permit Clerk SR-12
(PC-0079) P-29400 Land Use Permit Clerk SR-12

(PC-0038) P-26533 LU & Bldg Plans Tech SR-15 (9)
(PC-0056) P-28532 LU & Bldg Plans Tech SR-15
(PC-0081) P-29727 LU & Bldg Plans Tech SR-15

PLANNING SECTION

(PC-0042) P-26537 Planner VI SR-26

(PC-0022) P-26473 Planner V SR-24
(PC-0027) P-26491 Planner V SR-24 (6)
(PC-0055) P-28533 Planner V SR-24 (7)
(Expansion) P-30946 Planner V SR-24

(PC-0046) P-26541 Planner III SR-20 (8)

- (1) (PC-0070) P-28877 Budgeted reallocation from Secretary I (SR 14) to Secretary II (SR 16)
- (2) (PC-0057) P-28535 Senior LU&BP Examiner is a working supervisor supervising P-26556, P-29279, P-29400, P-26533, P-28532 and P-29727 operationally with P-26476 APO which works effectively for this section. This actual reporting structure has been in place from previous years since 2016, however, it is not reflected in the subject positions PD's as it should be. Reorganizations requirements of ZAED, including corrections to the PD's will be completed by June 30, 2021 to formalize the reporting hierarchy in place in accordance with County policy.
- (3) (PC-0077) P-29284 Zoning Inspector II SR 19 is pending reallocation review and approval by DPS to the budgeted position of Supervising Zoning Inspector SR23.
- (4) (PC-0048) P-26543 Budgeted reallocation from Zoning Inspector I (SR16) to Zoning Inspector II (SR19) NDA Attached
- (5) (PCT-0012) P-29899 Budgeted reallocation from Zoning Inspector Trainee (SR14) to Zoning Inspector I (SR16) - NDA Attached
- (6) (PC-0027) P-26491 Budgeted reallocation from Planner IV (SR22) to Planner V (SR24) - NDA Attached
- (7) (PC-0055) P-28533 Budgeted reallocation from Planner IV (SR22) to Planner V (SR24) - NDA Attached
- (8) (PC-0046) P-26541 Budgeted reallocation from Planner IV (SR22) to Planner III (SR20) - NDA Attached
- (9) (PC-0038) P-26533 Budgeted reallocation from LU&BP Examiner (SR 19) to LU&BP Technician (SR-15) NDA Attached

Department Submittal/Approved by:

Jordan S. Hart
Printed Name/Signature of Department Director Date 2021.03.22

Approved by:

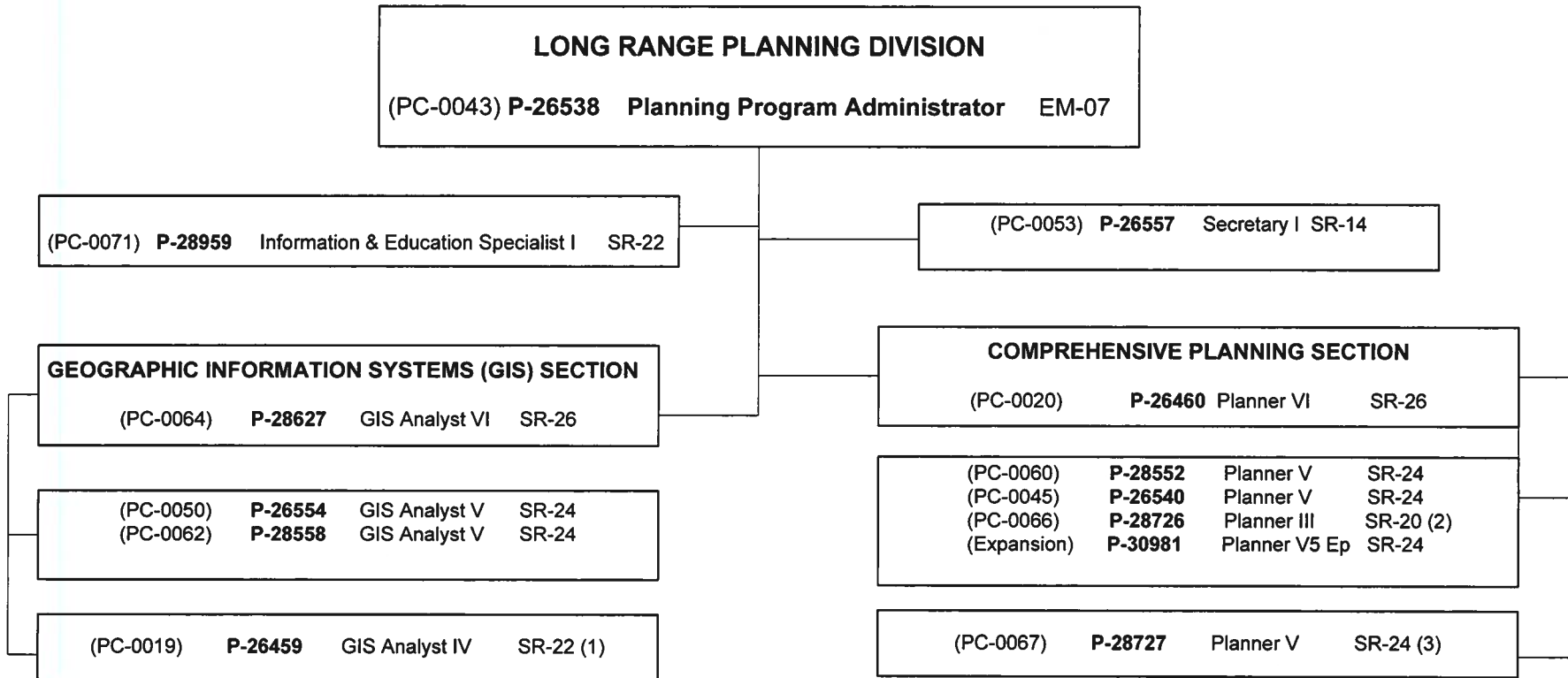
Sandy K. Baz
Sandy K. Baz, Managing Director Date 3/30/21

RECEIVED
2021 MAR 22 PM 2:39
OFFICE OF THE MAYOR

LONG RANGE PLANNING DIVISION
DEPARTMENT OF PLANNING
COUNTY OF MAUI

TABLE OF ORGANIZATION
As of September 30, 2020

FY 2021 Organizational Charts



- (1) P-26459 Budgeted reallocation from GIS Analyst IV (SR 22) to GIS Analyst V (SR 24) anticipated by 6/30/2021.
- (2) P-28726 Budgeted reallocation from Planner V (SR 24) to Planner III (SR 20) NDA Attached.
- (3) P-28727 Budgeted reallocation from Planner IV (SR 22) to Planner V (SR 24) NDA Attached

Department Submittal/Approved by:

Michelle McLean Mchuliah
Printed Name/Signature of Department Director

1-4-21
Date

Approved by:

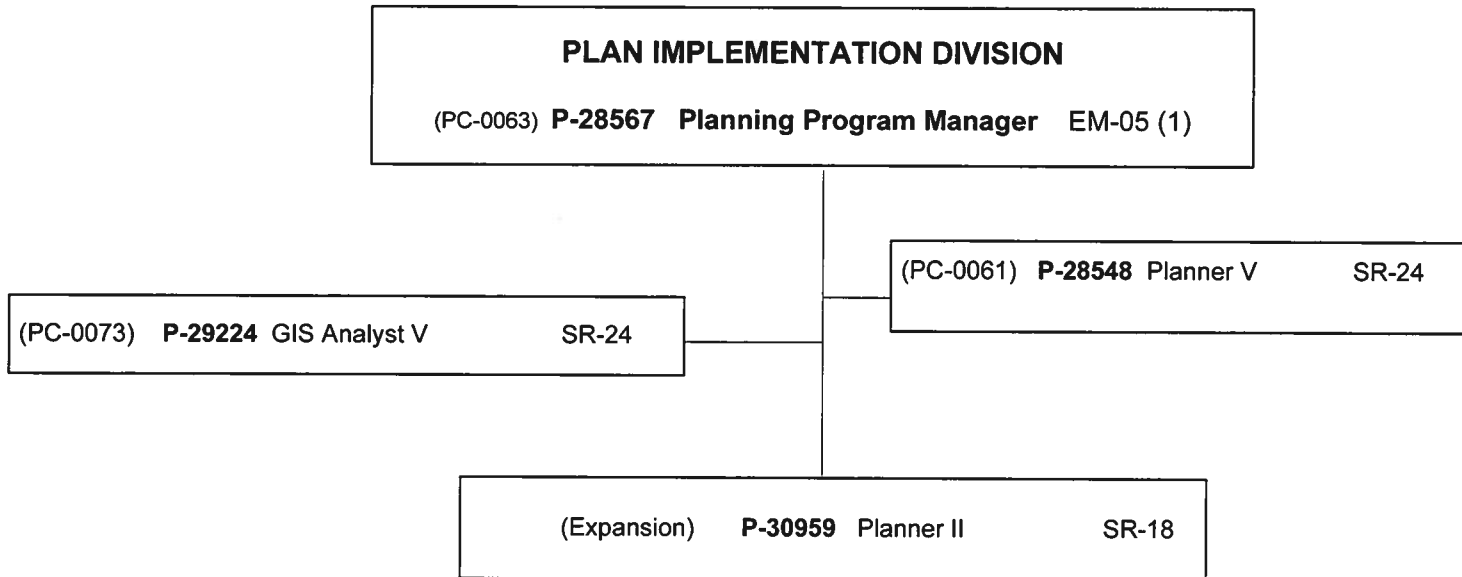
Sandy K. Baz
Sandy K. Baz, Managing Director

FEB 1 2021
Date

PLAN IMPLEMENTATION DIVISION
DEPARTMENT OF PLANNING
COUNTY OF MAUI

TABLE OF ORGANIZATION
As of September 30, 2020

FY 2021 Organizational Chart



(1) Budgeted reallocation of Administrative Planning Officer (EM 03) to Planning Program Manager (EM 05) – NDA attached